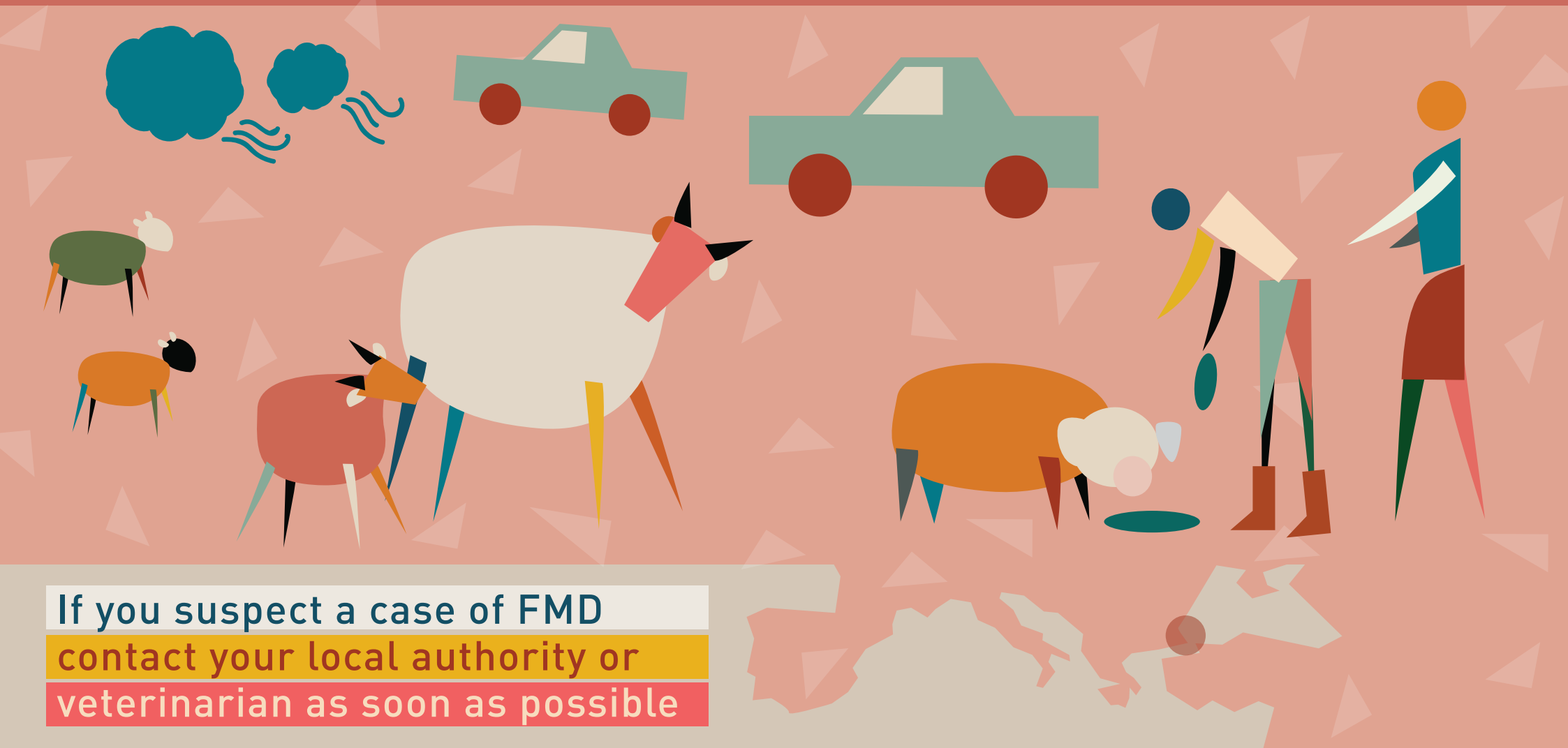


FOOT-AND-MOUTH DISEASE

HOW DOES IT SPREAD?

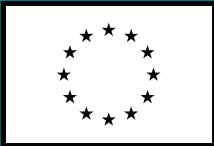


TRANSMISSION ROUTES

		Direct animal contact	The most important transmission route
		Animal products	The second most important transmission route is through ingestion of infected animal products E.g. feeding of waste human food or untreated milk to young animals
		Mechanical transmission	Other routes of transmission can be through mechanical transmission from virus particles on inanimate objects such as footwear, clothing, veterinary instruments or vehicles.
		Wind	Transmission by wind is not as common but possible, especially if big pig farms are in the vicinity, and under certain weather conditions Cool temperatures and higher humidity favor virus transmission by wind.



Food and Agriculture
Organization of the
United Nations



Funded
by the
European
Union